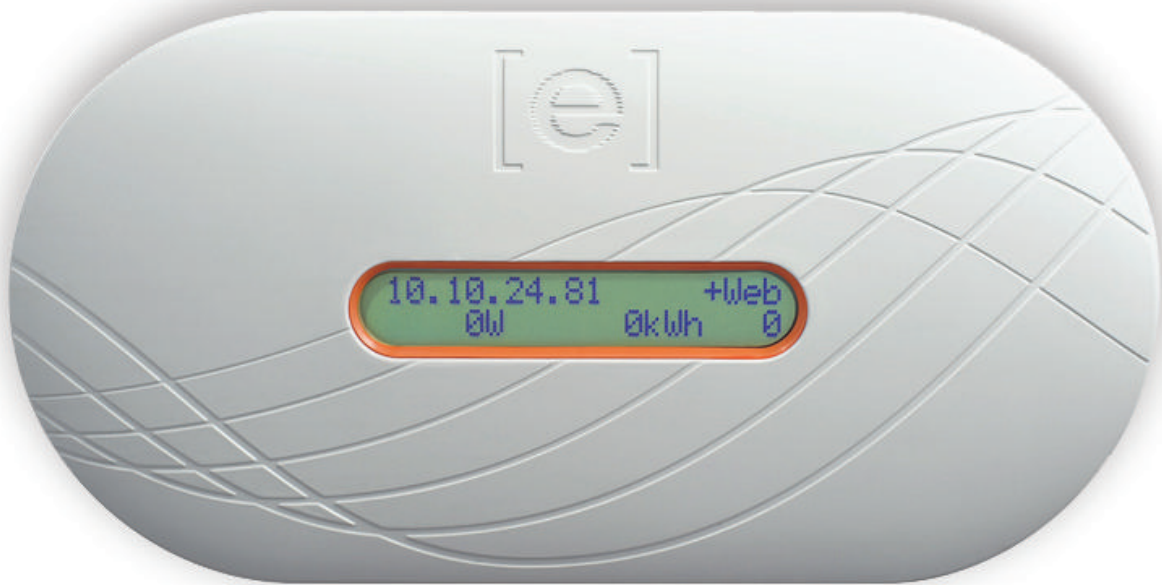


# Enphase® **Envoy**® Communications Gateway™



The Enphase **Envoy Communications Gateway** is the networking hub for the Enphase Microinverter System.

System owners can easily check the status of their solar system using the Envoy's LCD display or they can get detailed performance information through Enlighten®, Enphase's web-based monitoring and analysis software, included with purchase of Envoy.

## **SMART**

- Includes web-based monitoring & control
- Integrates with smart energy devices

## **SIMPLE**

- Plug & play installation
- Automatic upgrades & diagnostics

## **RELIABLE**

- 24/7 monitoring & analysis
- Advanced data management & storage

---

### INTERFACE

Power Line Communications	Enphase proprietary
Local Area Network (LAN)	10/100 auto-sensing, auto-negotiating
USB	USB 2.0 interface, auto-sensing, auto-negotiation

---

### POWER REQUIREMENTS

AC supply	230 VAC, 50 Hz
Power consumption	2.5 watts typical, 7 watts maximum

---

### CAPACITY

Number of microinverters polled	Recommended up to 500
Metering accuracy	Qualified at +/- 5% or better

---

### MECHANICAL DATA

Dimensions (WxHxD)	222.5 mm x 112 mm x 43.2 mm (8.8" x 4.4" x 1.7")
Weight	340 g (12 oz)
Ambient temperature range	-40°C to +65°C (-40° to 149°F)
Cooling	Natural convection—no fans
Enclosure environmental rating	Indoor

---

### FEATURES

Standard warranty term	One year
Compliance	EN 60950-1, EN 55022 Class B, EN 55024, EN 50065-1, EN 50065-2-2, EN 61000-3-2, EN 61000-3-3

---

To learn more about Enphase microinverter technology, visit [enphase.com](http://enphase.com).

